

Hilltop Apartment II

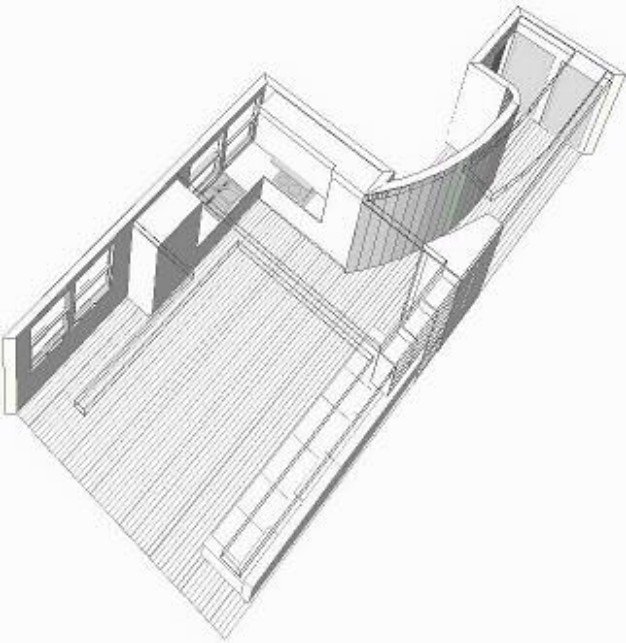
Bellevue Hill, Sydney 2003-04

www.barrettpinet.com

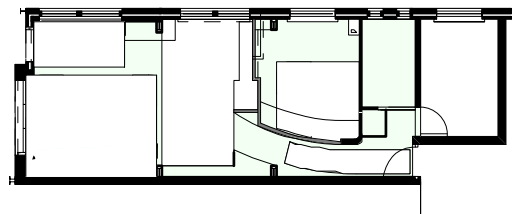
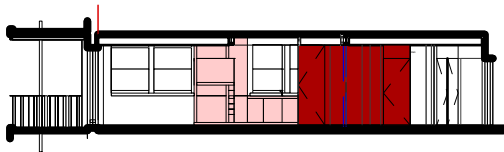
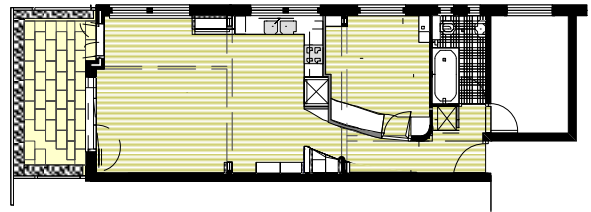
BARRETT PINET ARCHITECTURE

Schematic Design, Developed Design, Development Application, Construction Documents

The owner of this apartment in a red brick building built around 1940 requested a complete refurbishment of the apartment interior, including the removal of internal structural walls, replanning of room layouts, new joinery, kitchen, bathroom & electricals. The new interior spaces are more suitably oriented to the balcony and views to the north-east, and are characterized by modulated ceilings to conceal new beams and columns and a high level of detail and coordination of designed elements.



ALTERATIONS &
ADDITIONS -
AS PROPOSED



EXISTING APARTMENT -
PHOTOS, PLAN

