

Note: Participation by Roger Barrett or Danielle Pinet in projects featured within "Background Experience" as employees of firms is clearly stated, and copyright for those projects remains with the firms. Copyright or authorship for other projects within "Background Experience" rests with Roger Barrett or Danielle Pinet, individually, in partnership, in association with other architects, or through universities.

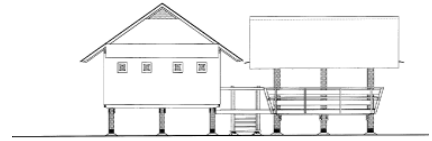
BACKGROUND EXPERIENCE

8

Small Office Building

Diwan Reserve, Shire of Douglas, Queensland 1995

Design, Design Development, Documentation. Small office for the management of the Reserve. The building is elevated, in timber with a corrugated iron roof, all louvered walls for good ventilation. The access walkway connects the two pavilions. Danielle Pinet, project architect, Pacific Architecture.

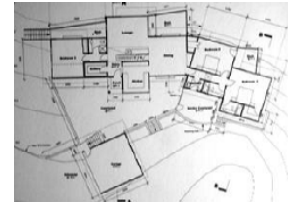


Week House

Waiheke Island, New Zealand 1995

Schematic Design, Development Application. Hillside three bedroom house, with studio on top level. The house sits comfortably along the contour lines, taking advantage of the northern sun. The house has a light timber framed structure with a corrugated iron roof.

Danielle Pinet, architect participant in design & submission team, Pacific Architecture.

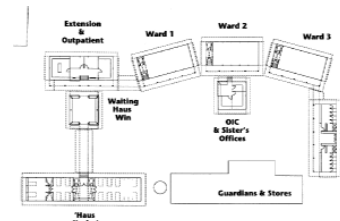


Gasmata Health Care Centre

Gasmata, Papua New Guinea 1995

Schematic Design for the Gasmata Community Government. The building comprises a series of timber and corrugated iron pavilions housing the different wards and other components of the centre. The pavilions are linked by an open verandah and generate a central court.

Danielle Pinet, design architect, Pacific Architecture.



Tidal River Accommodation Units

Wilson's Promontory National Park, Victoria 1996

A project for 17 accommodation units trying to impact as little as possible on the landscape, giving a sense of being in close contact with the environment. The buildings are long light weight sheds that seem to float over the ground, along the river.

Danielle Pinet, design development & contract documentation subcontract for Ken Latona Architect.

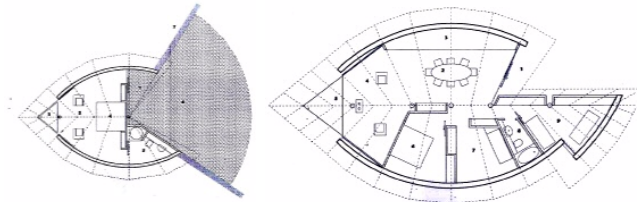


Coorong Accommodation Units

Coorong National Park, South Australia 1996

A proposal for 19 tourist accommodation units and guest facilities, in a delicate and windy strip of sand overlooking the ocean. These refuges seem shaped by the winds, and act as wind barriers extending themselves with walls to enclose protected forecourts.

Danielle Pinet, design development & proposal presentation subcontract for Ken Latona Architect.

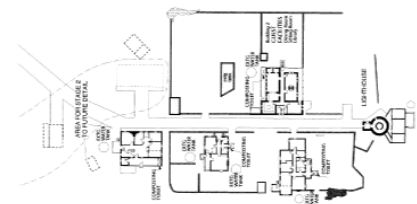


Lighthouse Precinct Accommodation

Wilson's Promontory National Park, Victoria 1996

In order to preserve the existing character of the Lighthouse precinct, the proposal reuses all the existing structures for accommodation & guest facilities with small alterations to support the new function, and the addition of composting toilets.

Danielle Pinet, design development & presentation subcontract for Ken Latona Architect.

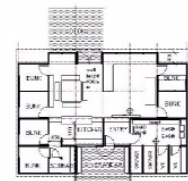


Hut at Kia Ora on the Overland Track

Cradle Mountain/Lake St Clair National Park, Tasmania 1996

Proposal for new guest house facilities & accommodation.

Danielle Pinet, schematic design subcontract for Ken Latona Architect.



Accommodation Unit

Wilson's Promontory National Park, Victoria 1996

Accommodation complementing the existing lighthouse buildings, providing rooms with bunkers, a central common room connected to cooking, mud room and bathrooms. Services include solar hot water and electricity, gas storage for cooking, water tanks, filtering and absorption trench for grey waters.

Danielle Pinet, design development and proposal presentation subcontract for Ken Latona Architect.

