

Mosman Green House

Mosman, Sydney 2004

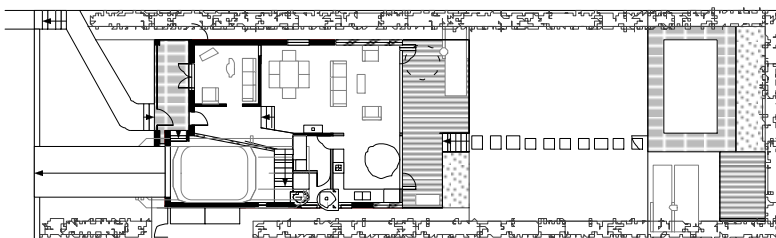
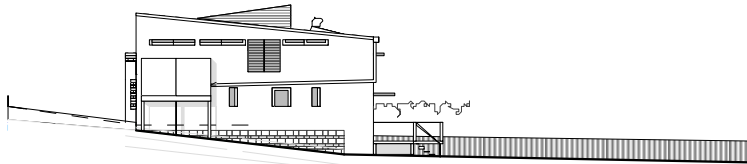
www.barrettpinet.com
BARRETT PINET ARCHITECTURE

Competition Design

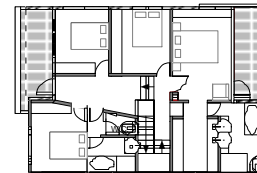
Complete transformation of a single storey Mosman cottage into a contemporary, energy efficient two storey house comprising a whole new level, a garage, extension and refurbishment of the ground level, and a gazebo/pool area at the rear of the site. The new master bedroom & ensuite takes full advantage of the views to Quakers Bay at the rear. North is at the rear therefore large surfaces of glass allow sun penetration and ventilation. A louvered dormer window over the center of the roof allows for light and ventilation to the top level as well as drawing hot air up through the stairway.



ALTERATIONS & ADDITIONS - PROPOSAL



GROUND FLOOR PLAN



UPPER FLOOR PLAN



EXISTING HOUSE - PHOTOS



