

# Petit Hotel

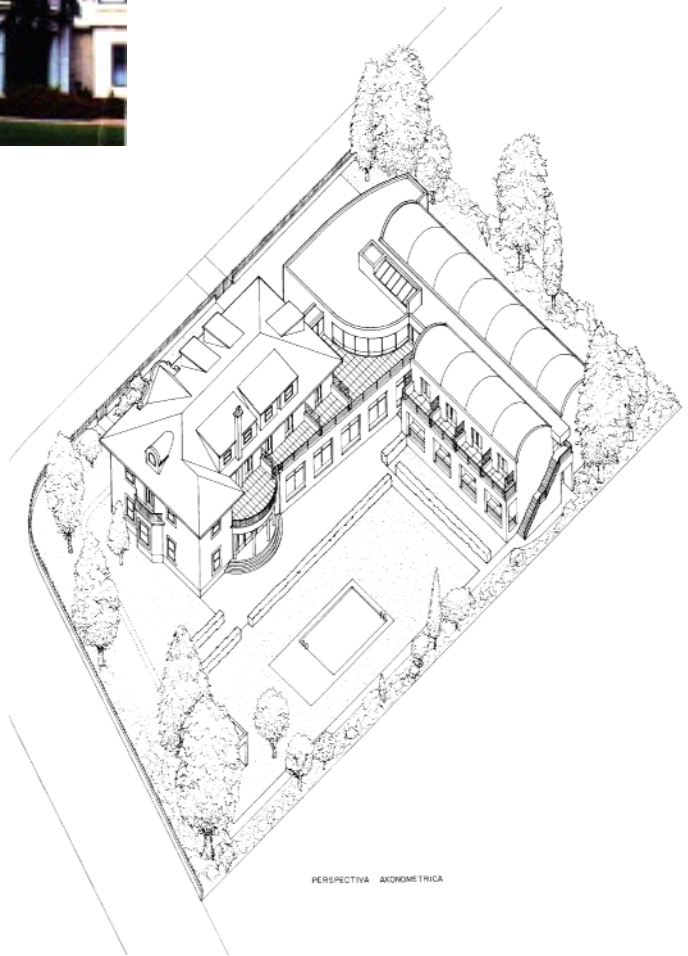
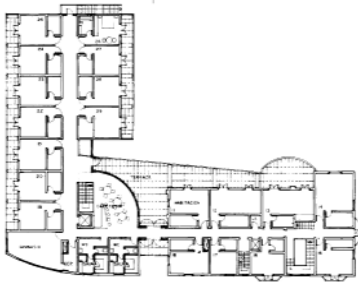
Montevideo 1992

info@barrettpinet.com

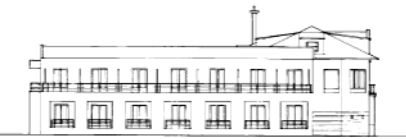
BARRETT PINET ARCHITECTURE

## Schematic Design

A study for the extension and conversion of a villa to make a small exclusive European style hotel of 35 rooms. A new wing is added to form a garden courtyard, which is fronted by restaurants, cafes and hotel rooms. The new wing is proposed in white stuccoed masonry with metal vaulted rooves and is subdued to the style of the existing house while adopting a contemporary language. At ground level the large traditional rooms of the house are used as public spaces. The new wing has ten rooms at ground level opening onto balconies facing the gardens. The connection between old and new is achieved with a new gallery that covers part of the existing house and ties it to the new wing. At the first level the bedrooms of the old house, with the addition of some bathrooms, become eight guest rooms. In the new wing at this level are eleven guest rooms, a gym and cafeteria. Six small guest rooms are located in the attic of the old house.



FACADA OESTE



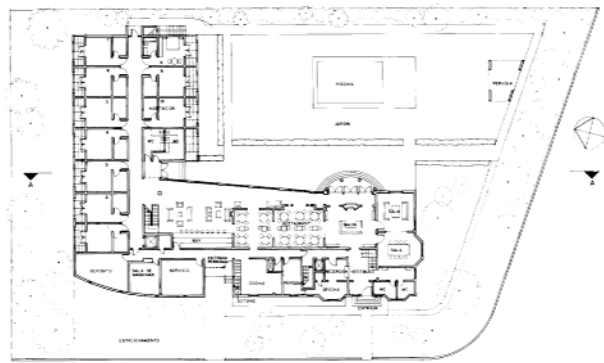
PERSPECTIVA AXONOMETRICA



CORTE A-A



FACADA SUR



PLANTA BAJA