

Waterview Wharf Office Fitout

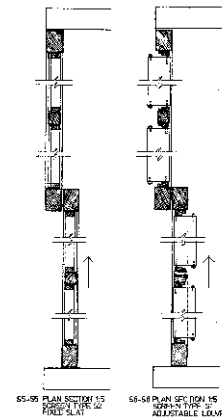
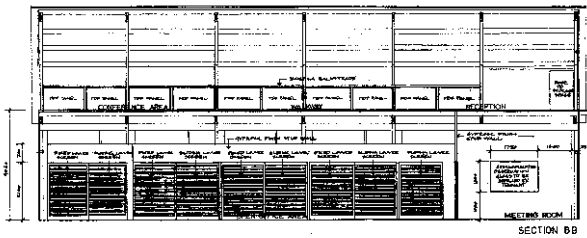
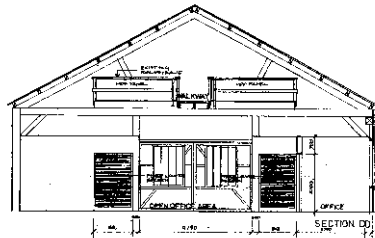
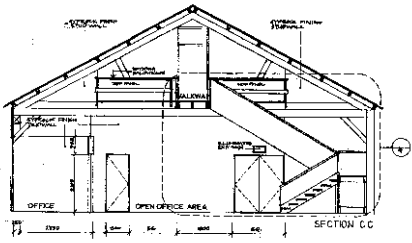
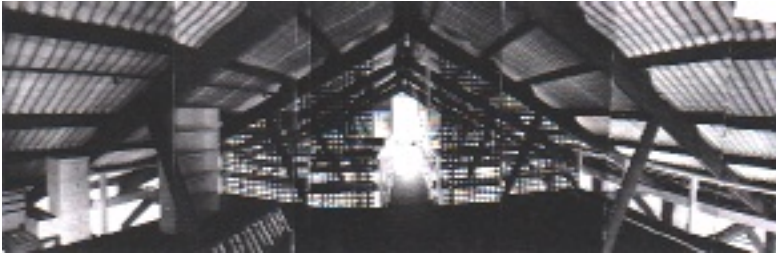
info@barrettpinet.com

Balmain, Sydney 1995

BARRETT PINET ARCHITECTURE

Design, Development Application / Building Application, Construction Documents, Tendering

An office fitout for a market research company of 12 staff, including stair, kitchen, bathroom, partitions, adjustable louvre screens and electrical work. Full documents were approved and tendered for this fitout located in an old timber wharf building on the Sydney harbour foreshore. The fitout features sliding timber louvre partition screens, a new timber stair and reception facilities which complement the rustic character of the wharf.



B/A

