

Baldwinson House

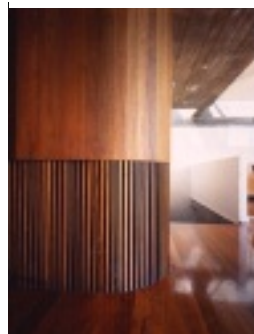
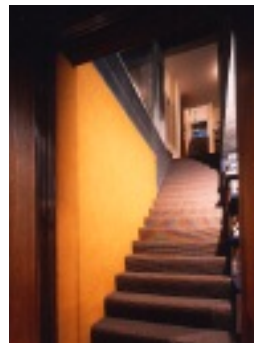
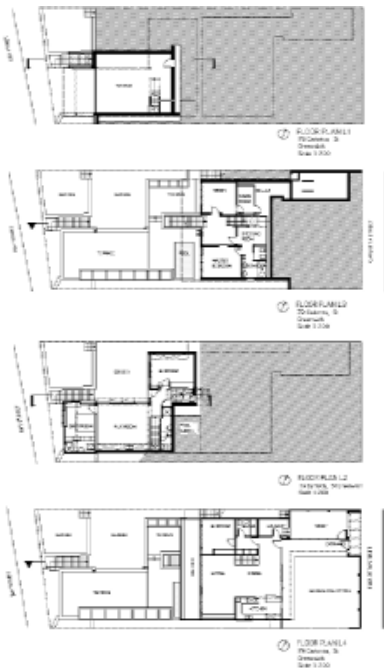
Greenwich, Sydney 1997-98

info@barrettpinet.com

BARRETT PINET ARCHITECTURE

Design, Building applications, Construction Documents, Tender, Documentation, Construction

Alterations and additions to architect A.N.Baldwinson's own house, built in 1954. A.Baldwinson was a pioneer of modern architecture in Australia. The house has a heritage listing at Municipality level. The existing two storey house is perched at the top of a sloping site, with its full width verandah that projects out from the lower level overlooking the harbour. The alterations and additions fully preserve the existing building and extend down the slope towards the harbour. A new stair connects old and new. The addition built in "L" shape wraps around the courtyard garden, and from it another stair takes you to the lane on the harbour side. The roof of the extension becomes a terraced garden with a small pool, enjoying magnificent views.



Copyright Barrett Pinet Architecture 2002

DETACHED HOUSES
ALTERATIONS + ADDITIONS